

# READYFLOR INSTALLATION INSTRUCTIONS

## In General

An expansion gap is left to the entire perimeter of the floor to allow for initial and seasonal expansion. The boards are generally installed along the length of the room with the ends of boards laid with a natural random stagger. A successful installation will rely heavily on strict adherence to these instructions. The two most common causes of failure are uneven subfloors, and inadequate expansion to the perimeter of the floor. An uneven subfloor may lead to movement of the flooring underfoot and within the joining system, resulting in excessive noise, which often sounds like "crackling" or "creaking".

## Tools Needed

The Readyflor Installation Kit contains expansion wedges, a pulling iron and a tapping block. You will also require a jigsaw, pencil, hammer, tape measure, sharp "Stanley" type knife and small hand tools associated with wood working. Along with your Readyflor Uniclic you'll need your Approved Underlay, and enough trims to complete your floor. Colour matched or aluminium trims are available in a range of shapes, profiles and colours from your local Readyflor Retailer.



## Preparation

The first thing that you'll need to do is to ensure that the subfloor or surface that the Readyflor is being installed over is level. Using a 1 metre straightedge, the subfloor level should not exceed +/- 3mm over 1 lineal metre in any direction. Remember, uneven floors may lead to movement and noise, so it is necessary to assess the levelness and get it right. Timber floors can be sanded level and concrete floors or existing floor coverings can usually be levelled using a self-levelling compound. Readyflor cannot be installed over carpet or carpet underlay but can be installed over well bonded vinyl, cork, ceramic tiles if sufficiently level.

Readyflor must be installed over a continuous damp proof membrane when installed over concrete subfloors or timber subfloors directly above ground. This continuous damp proof membrane can be provided by 200uM builders plastic, overlapped 300mm at the joins and taped with a vapour tight tape or by the use of Premium Combi-Lay or Premium Quiet Step Combi-Lay Underlay. Combi-Lay underlays are manufactured with a plastic damp proof membrane on one side and are conveniently fitted with a 100mm overlap and peel and stick tape. Combi-Lay is rolled out along the starting wall with the plastic down, peel and stick side to the wall. Additional rows are rolled out with tape down over the extended clear overlap. The wax tape can then be peeled away forming the continuous damp proof. Cut ends must be taped with a water proof tape.

In the instance of knowingly or logically wet subfloors, or heated subfloors, always use 200uM builders plastic sheeting, overlapping joins by 300mm, taping joins with waterproof tape and turning up at walls or vertical fixtures.

Door frames and architraves should be undercut prior to commencing installation using a scrap of flooring and a long, flexible hand saw. Undercut saws may be available from your local Readyflor Retailer and are specifically



designed for this purpose, (see left).

Work out the trims to be installed as some trims are easier to install prior to the flooring. This will be dependant on the direction of the trim to the flooring and the type of trim to be installed.

### **Special Notes**

10mm is the minimum perimeter expansion gap for all applications. Larger floors or floors that will be exposed to higher levels of relative humidity will need larger expansion gaps. Some multi-room or very large installations will need expansion joints installed throughout the floor. In most cases, multi-room installations will need to be separated at doorways using universal trims, a range of which are available from your local Readyflor Retailer. Your Readyflor Retailer or local Floorscape Ltd will be able to advise you in this regard.

Gluing along the top of the tongue during fitting may sometimes be recommended under certain conditions to enhance the floors moisture resistance. End joints of Beech Readyflor should be treated in this way due to its reaction to moisture ingress. Readyflor can be direct stuck to a prepared subfloor using a recommended polyurethane adhesive. Seek special instructions from Floorscape prior to commencing a direct stick installation.

When installing Readyflor on stairs, glue both tread and riser using a recommended polyurethane or construction adhesive. Seek special instructions from your Floorscape Ltd. prior to commencing a direct stick installation.

It is the installer's responsibility to check each board for faults or defects, in appropriate finished lighting conditions, prior to installation. Labour costs or any other costs associated with the replacement of boards after they have been installed will not be accepted by Floorscape Ltd or its agents.

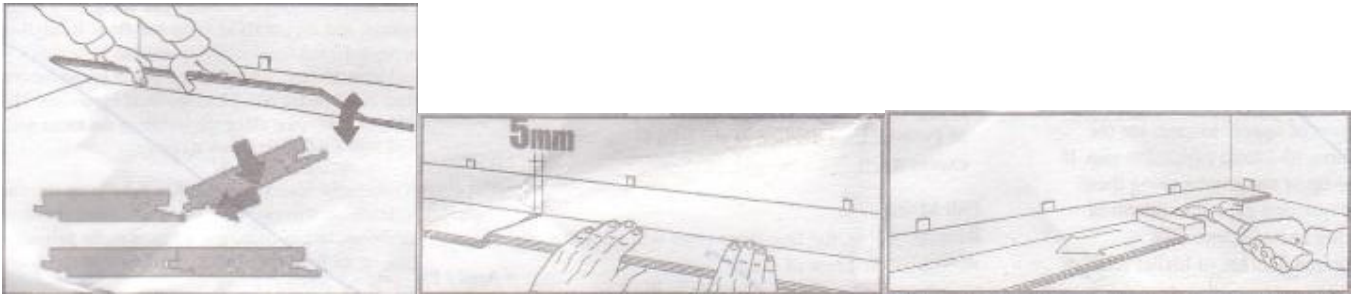
### **Installing the first 3 rows**

Select a starting wall that is long and visible, the first three rows will be installed parallel to this wall. Install the first row of plastic and/or underlay as required and then install the first row, groove (female) to the wall to assess the straightness of the starting wall. If the starting wall is undulating or uneven, square this row off to the other side of the room using a tape measure and scribe the first row of boards to cater for the undulations while accommodating a uniform 10-14mm expansion gap. If scribing is not required, remove the lower lip of the groove along these starting boards. In terms of the required expansion gap, a minimum of 10mm is required in lower relative humidity levels like Melbourne or Hobart. A 14mm gap is required in areas of higher relative humidity.

Now lay the first row directly against the wall. Engage the end joints by rotating into position (we will space off the first three rows later). Cut the end board and leave a 10mm gap at each end. Fit a 10-15mm spacer at the start of the row to set the gap required.

The off cut from the last board in the first row now starts your second row, providing it is longer than 300mm. If not, a new board will need to be cut to begin the second row. Now install the first board of the second row by rotating the long join into position and install the 10-15mm spacer at the start of this row, (see top left). The long join of the second board can now be rotated into position, (see middle left). The end joint is then closed using the block and hammer (see bottom left). Ensure that the tapping block is square with the board end and that the end joint to be closed is properly aligned. This is important in order to avoid damage to either end of the board. Continue installing the floor left to right using the off cut from row two to begin row three. (Note: Remember to ensure that you stagger end joints by greater than 300mm). Any small gaps in the first three rows can be filled using a caulking compound in an appropriate colour.

We can now slide these three rows off the wall and install the 10-15mm spacers.



## The body and the final row

Continue installing the floor left to right using the rotate and tap technique described earlier. The final row will need to be trimmed to fit using a jigsaw and brought into place using the pulling iron. Remember to allow 10-14mm for your expansion gap at all walls and vertical surfaces. This gap will be covered last of all.

## Finishing Off

Where skirting boards have been left in place, it is now time to fit colour matched scotia moulding to the perimeter of the floor to cover the expansion gap. Scotia is to be pinned to the skirting only so as not to inhibit the free movement of the floor. If skirting boards have been removed or are yet to be fitted, they will usually cover the expansion gap well. Install any End, Universal or Border profiles that have not been fitted during the installation process. These trims must hold the floor in place and provide for full and free expansion of the flooring. Finally, any gaps at the floor perimeter that could not be covered with skirting or profiles, can be filled with a caulking compound in a matching colour. Any gaps between boards can also be filled at this time. Your Readyflor can now be cleaned and enjoyed.

## Installation over Moist Sub Floors

Unlike many other floor covering options, Readyflor can be installed over moist subfloors.

As Readyflor is a floating floor and therefore not directly adhered to the subfloor, simply installing black plastic sheeting underneath the foam underlay or Combi-Lay underlay, will protect your floor from rising subfloor moisture. Floorscape recommends the use of plastic sheeting or Combi-Lay underlay under all installations. Here are some tips to installing your plastic sheeting.

Your subfloor, whether it is concrete, timber or particleboard, should be clean and level.

## Roll out your Plastic & Foam

We recommend the use of plastic sheeting that is at least 200uM thick.

After selecting your board direction and undercutting your door frames, roll out your first row of plastic sheeting along your starting wall. The plastic sheeting should then be trimmed using a sharp "Stanley" type knife, making sure you allow the sheeting to cover the entire floor area and run up the walls and vertical fixtures 100mm (the excess will be trimmed off after you have installed your floor). Now roll out your foam underlay and begin installing boards. When it comes time to roll out your next row of plastic sheeting, remember to overlap all joins by 300mm and tape each join well using a vapour-tight tape like duct tape.

For concrete or timber floors in older buildings that are not knowingly or logically wet or moist, the alternative to using plastic sheeting then foam underlay is to purchase Floorscape Combi-Lay Foam

Underlay. Available in either Standard or Unisound qualities. Combi-Lay combines both foam underlay and plastic in the one layer. If there is any doubt as to the moisture content of a subfloor, carry out appropriate moisture tests prior to installation.

### Installation over heated sub floors

Unlike many other floor coverings, Readyflor can be installed over heated concrete subfloors, providing the following three conditions are met:

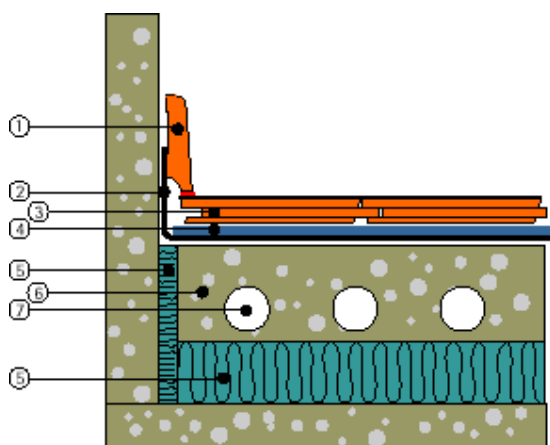
(i) Use 200uM Builders plastic sheeting under the foam underlay prior to installation as per instructions for Installation over Moist Subfloors. For more information, click the link at the bottom of this page.

(ii) Ensure that your heating system is run at anticipated operating levels for a period of no less than 2 weeks. The heating system should then be turned off and the subfloor left to cool for three days prior to commencing installation of flooring.

(iii) The maximum surface temperature of the concrete slab should not exceed 28 degrees Celsius at all times.

For best results, installation should be carried out with the heating system turned off. 24 hours after completion of the installation, the heating system should be turned on and the temperature increased gradually over a 7 day period until the normal operating temperature has been reached.

**It should be noted that, Floorscape does not recommend the installation of Readyflor Kempas, Readyflor Red Ironwood or Readyflor Blackbutt in 1 Strip, 2 Strip or 3 Strip, over heated concrete subfloors.**



#### Key

1. Skirting Boards
2. Plastic Sheeting
3. Readyflor Flooring
4. Foam Underlay
5. Wadding / Packing
6. Heating Elements